

Data Sheet

LL01CT-AMYxxL06

CREE

▶ LED Solution Provider


CXA 30xx


■ Features & Typical Applications

- High efficiency
- Available with 2 beam angles
- Optimized Uniformity
- Lens without Holder
- Downlight
- Architectural Lighting
- Commercial Lighting

■ Table of Contents

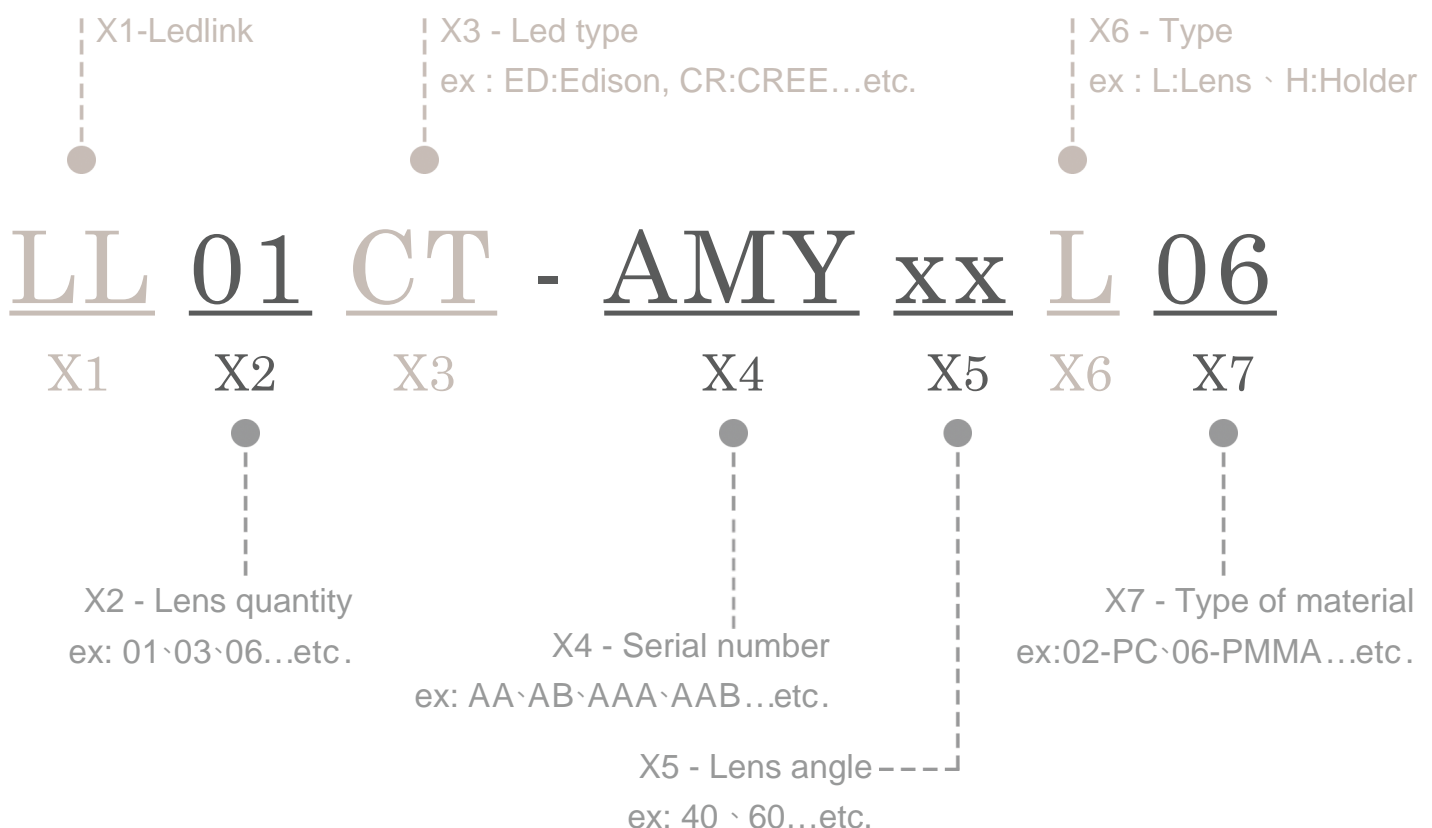
General Information & Product Nomenclature.....	P.2
Optical Specifications	P.3
Mechanical Specifications	P.4
Package Specifications.....	P.5

LL01CT-AMYxxL06

General Information

- Lens Material : PMMA 8N
- Operating Temperature range -40°C~+70°C(upper limit +80°C).
- Storage Temperature range -40°C~+70°C(upper limit +80°C).
 - * Average transmittance in visible spectrum 400nm~700nm>90%.
- Usage and Maintenance:
 1. If necessary, clean lenses with mild soap, water and soft cloth.
 2. Never use any commercial cleaning solvents on lenses, like alcohol.
 3. Please handle or install lenses with wearing gloves, skin oils may damage lens or its optical characteristic.

Product Nomenclature



LL01CT-AMYxxL06 Optical Specifications

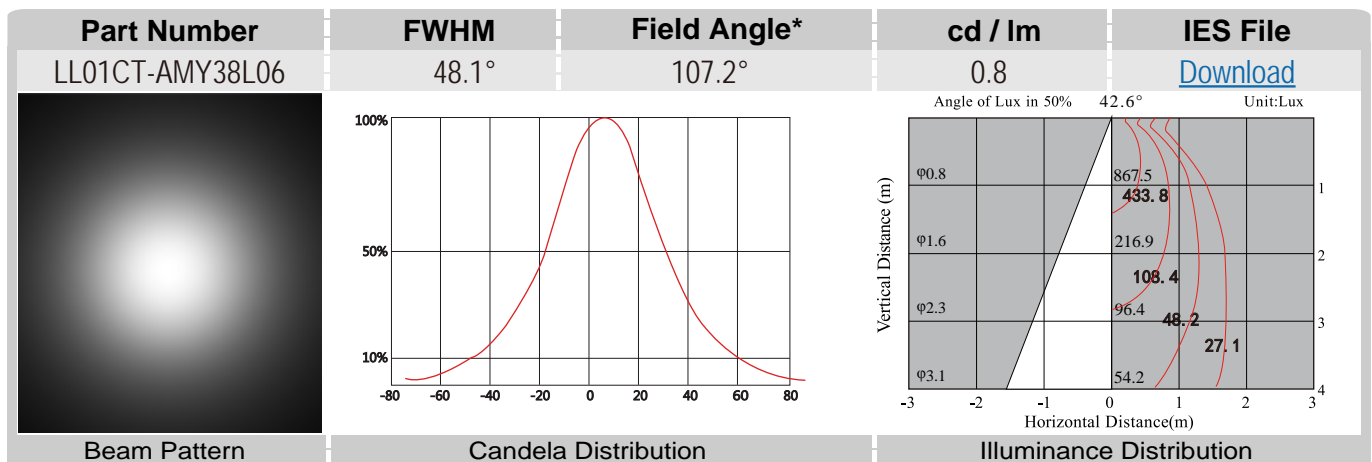
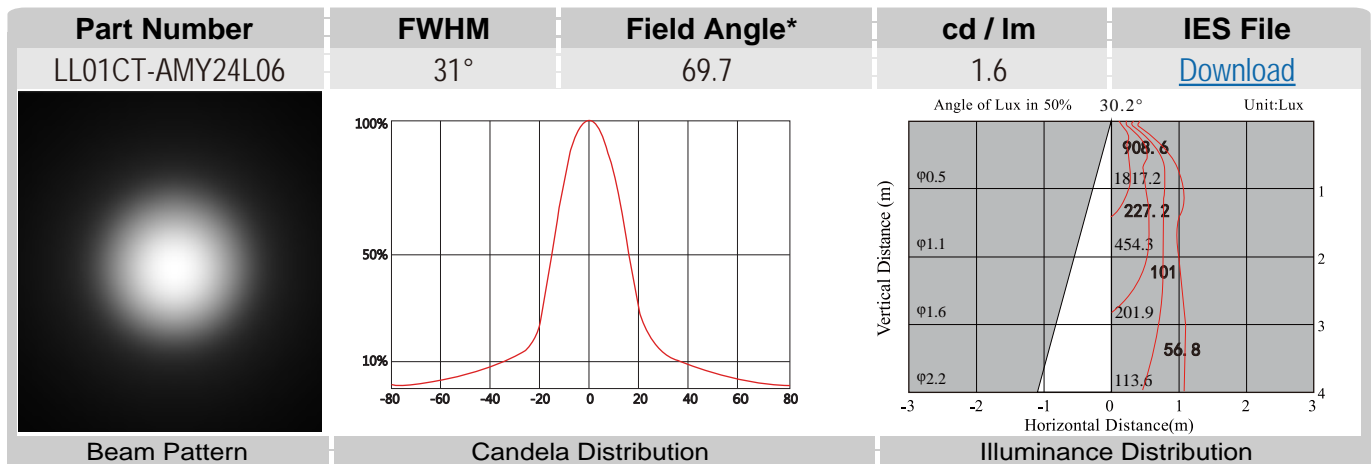


LED Solution Provider



CXA 30xx

Note: (1) All the results of analysis are based on 0 degrees of elevation.
(2) Tolerance: $\pm 10\%$.
(3) Led Luminous Flux(lm): 1074($\pm 5\%$).



*The Field Angle is the angle between the two directions opposed to each other over the beam axis for which the luminous intensity is 10% that of the maximum luminous intensity.
*This testing result is obtained through testing the popular rank LED samples which provided by the original manufacturer. Hence, the testing results would be varied as the users choose same LED model but different rank.

LL01CT-AMYxxL06 Mechanical Specification

1. Fixing method

☐ Glue

☐ Screw

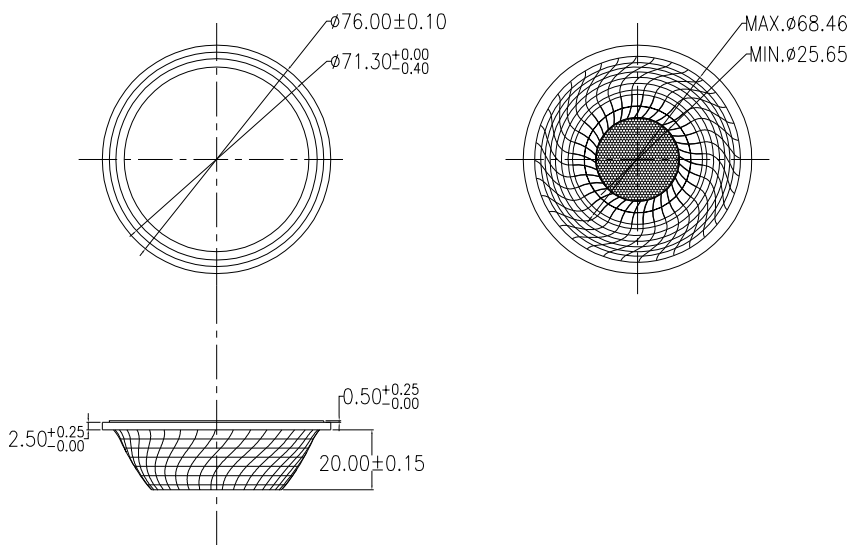
☐ Tape

☐ Fixing-ring

☒ Frame

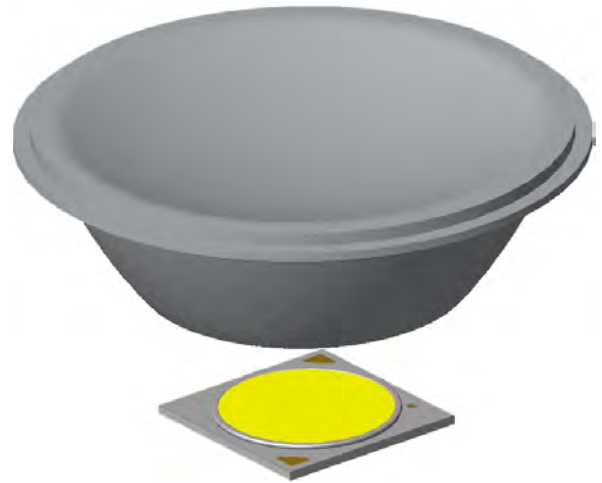
Note: (1) All dimensions are in mm.
 (2) All tolerance are ± 0.15 mm unless otherwise specified.

2. Lens dimension

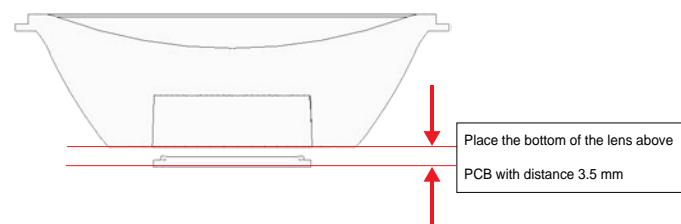


4. Holder dimension

3. Lens + Leds assembly instruction



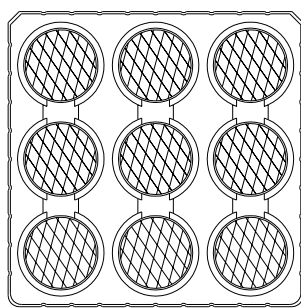
5. View assembly lens with LED:



LL01CT-AMYxxL06

Package Specifications

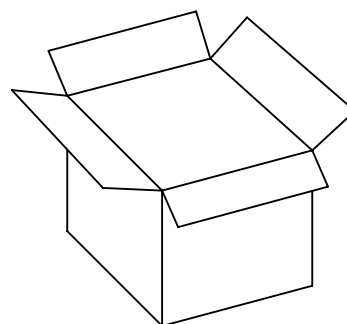
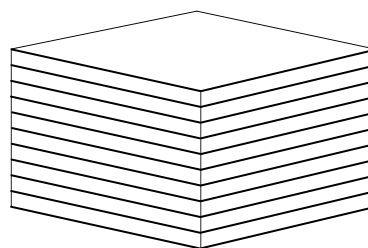
Item	Quantity	Total	Size(L*W*H)	G.W
plastic box	9 pcs/plastic box	9 pcs	26.6*26.6*2.8 cm	58.4g
outer box	7 plastic box/outer box	63 pcs	29*29*22 cm	



LL-0336



9 pcs/plastic box



63 pcs/outer box



Note: